

HUNTERS®

HERE TO GET *you* THERE

Alderney Road, London, E1

By Auction £725,000

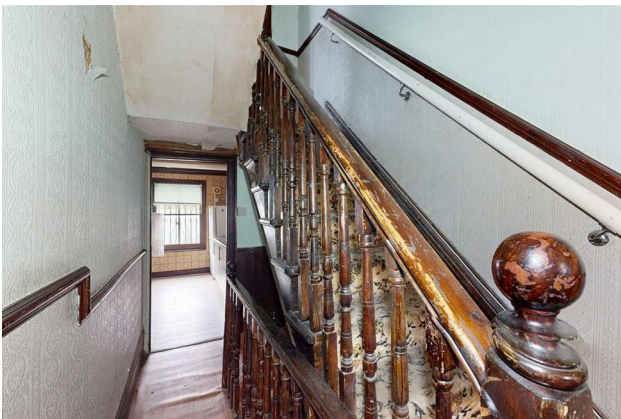
Property Images



HUNTERS®

HERE TO GET *you* THERE

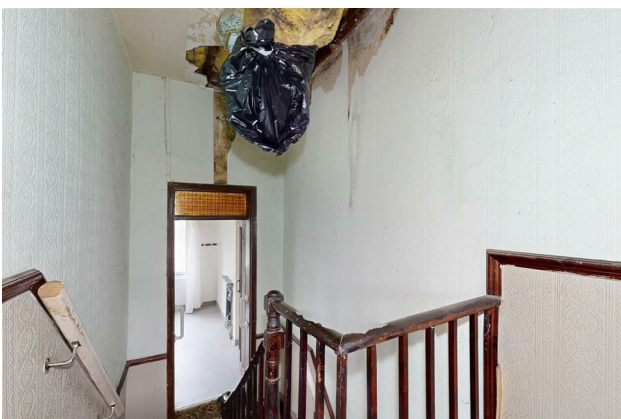
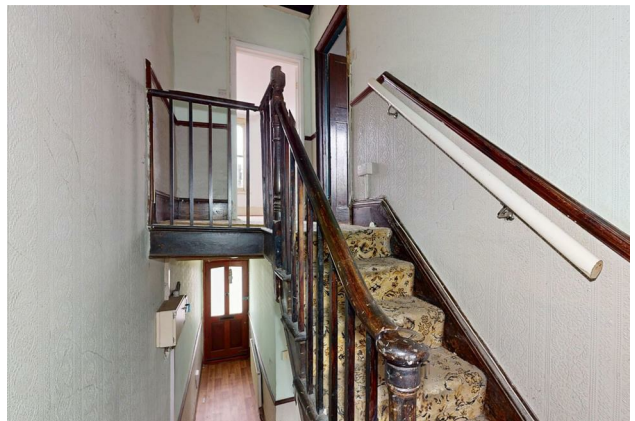
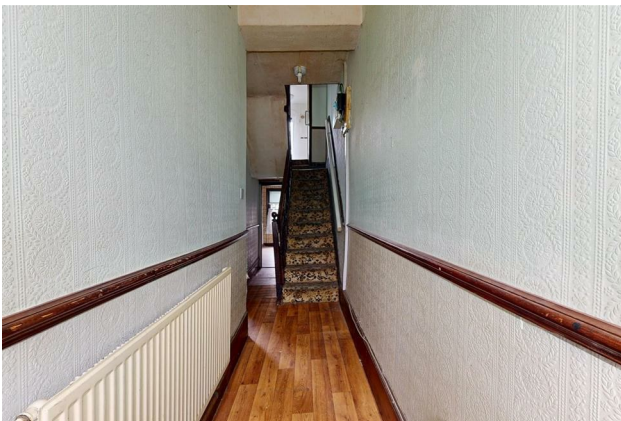
Property Images



HUNTERS®

HERE TO GET *you* THERE

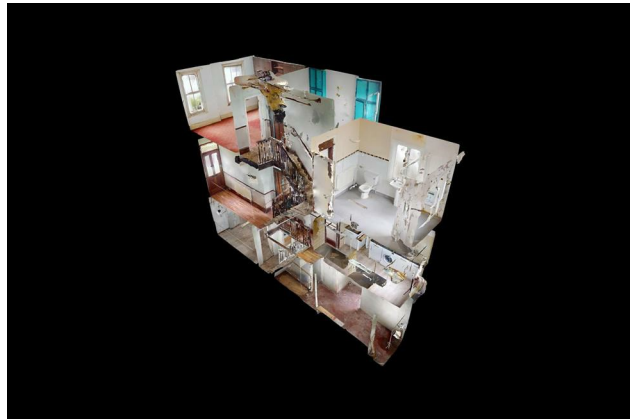
Property Images



HUNTERS®

HERE TO GET *you* THERE

Property Images



HUNTERS[®]

HERE TO GET *you* THERE

Property Images


HUNTERS®

HERE TO GET *you* THERE



GROSS INTERNAL AREA
TOTAL: 128 m²/1,369 sq ft
FLOOR 1: 41 m²/437 sq ft, FLOOR 2: 44 m²/469 sq ft, FLOOR 3: 43 m²/463 sq ft
SIZE AND DIMENSIONS ARE APPROXIMATE, ACTUAL MAY VARY

EPC

Energy Efficiency Rating		
	Current	Potential
Very energy efficient - lower running costs		
(92 plus) A		90
(81-91) B		
(69-80) C		
(55-68) D	66	
(39-54) E		
(21-38) F		
(1-20) G		
Not energy efficient - higher running costs		
England & Wales		EU Directive 2002/91/EC 

Map



Details

Type: House - Mid Terrace Beds: 4 Bathrooms: 1 Receptions: 2 Tenure: Freehold

Summary

Available chain free, this freehold property requiring full modernisation is situated on a quiet residential street.

Available to view by appointment only the property is split over three levels, the lower ground floor has a two 3 rooms, the raised ground floor has a double reception into bay window and separate kitchen, the first floor has two further rooms and a bathroom.

Alderney is a quiet residential, tree lined street only a short walk from Mile End Road and its wide range range of shops, bars, restaurants and coffee houses.

Transport links include, Stepney Green Station (Circle, District and Hammersmith & City lines) and a variety of bus routes into The City and West End.

Features